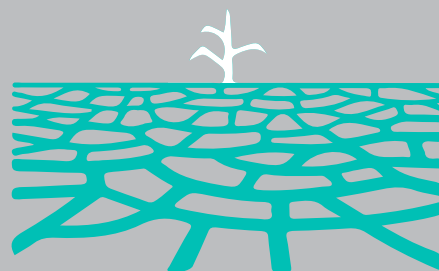


HOW CLIMATE CHANGE AFFECTS YOUR HEALTH

EXTREME WEATHER

Nearly **3,000 people died** in Puerto Rico because of Hurricane María in 2017.¹

Increased flooding & storms



More frequent droughts

In MA, there was a **13% increase** in emergency room visits related to gastrointestinal illness following extreme precipitation events that resulted in sewer overflows.²

Severe storms and flooding have cost at least **\$643B in damage** since 1980.³

Water contamination

Property loss

Infrastructure damage

More intense wildfires

Between 5,200 and 8,500 respiratory hospital admissions per year are caused by wildfire smoke in the U.S.⁴

Waterborne illness

Mental health distress

Injury & death

Aggravated respiratory illnesses

1. <https://publichealth.gwu.edu/sites/g/files/zaxdzs4586/files/2023-06/acertainment-of-the-estimated-excess-mortality-from-hurricane-maria-in-puerto-rico.pdf>

2. <https://www.ncbi.nlm.nih.gov/pmc/articles/PMC4559956/>

3. <https://www.ncei.noaa.gov/access/billions/summary-stats>

4. <https://www.ncbi.nlm.nih.gov/pmc/articles/PMC6117838/>