



BUILD YOUR STORY: Using CDC Data Tools to Shine a Light on Environmental Justice Issues in Your Community

March 28, 3:00 – 4:30 PM ET

Closed Captioning is available.
Spanish interpretation is available.



MODERATOR



Victoria Bortfeld, MPH
Program Manager, Environmental Health
APHA



Linking Environmental Justice and Data



Image: The National Justice Survey, Canada

PRESENTERS



Patrick Wall

Computer Scientist

Environmental Public Health Tracking Program, CDC



Shannon DeWitt

IT Specialist

Environmental Public Health Tracking Program, CDC





Environmental Public Health Tracking:
**Better information
for better health**

Division of Environmental Health Science and Practice
National Center for Environmental Health



Presentation Outline

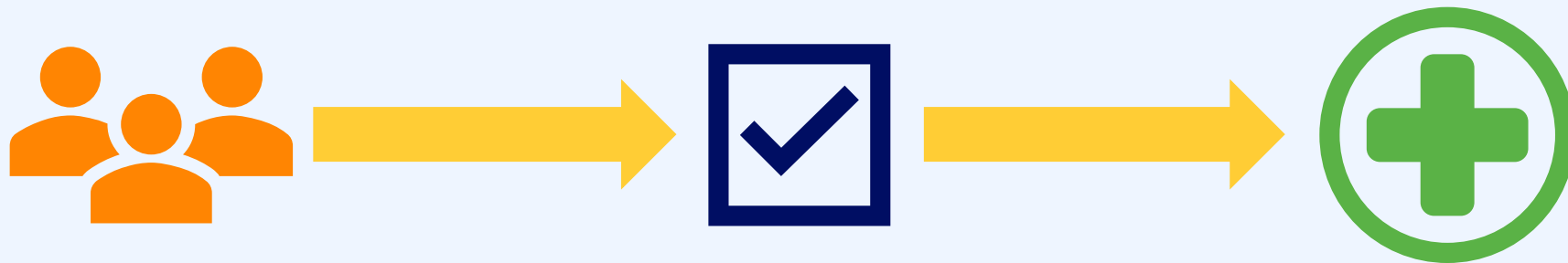
- Introduction to Tracking
- Tracking in Action
- Resources for Preparedness
- Tracking and EJ
- Tracking Network Demonstration

- Q & A

INTRODUCTION TO TRACKING



PROVIDES BETTER INFORMATION FOR BETTER HEALTH



Tracking empowers people to make information-driven decisions to protect and improve health.

National Environmental Public Health Tracking Program

26

Funding Recipients

25 states / 1 city

48

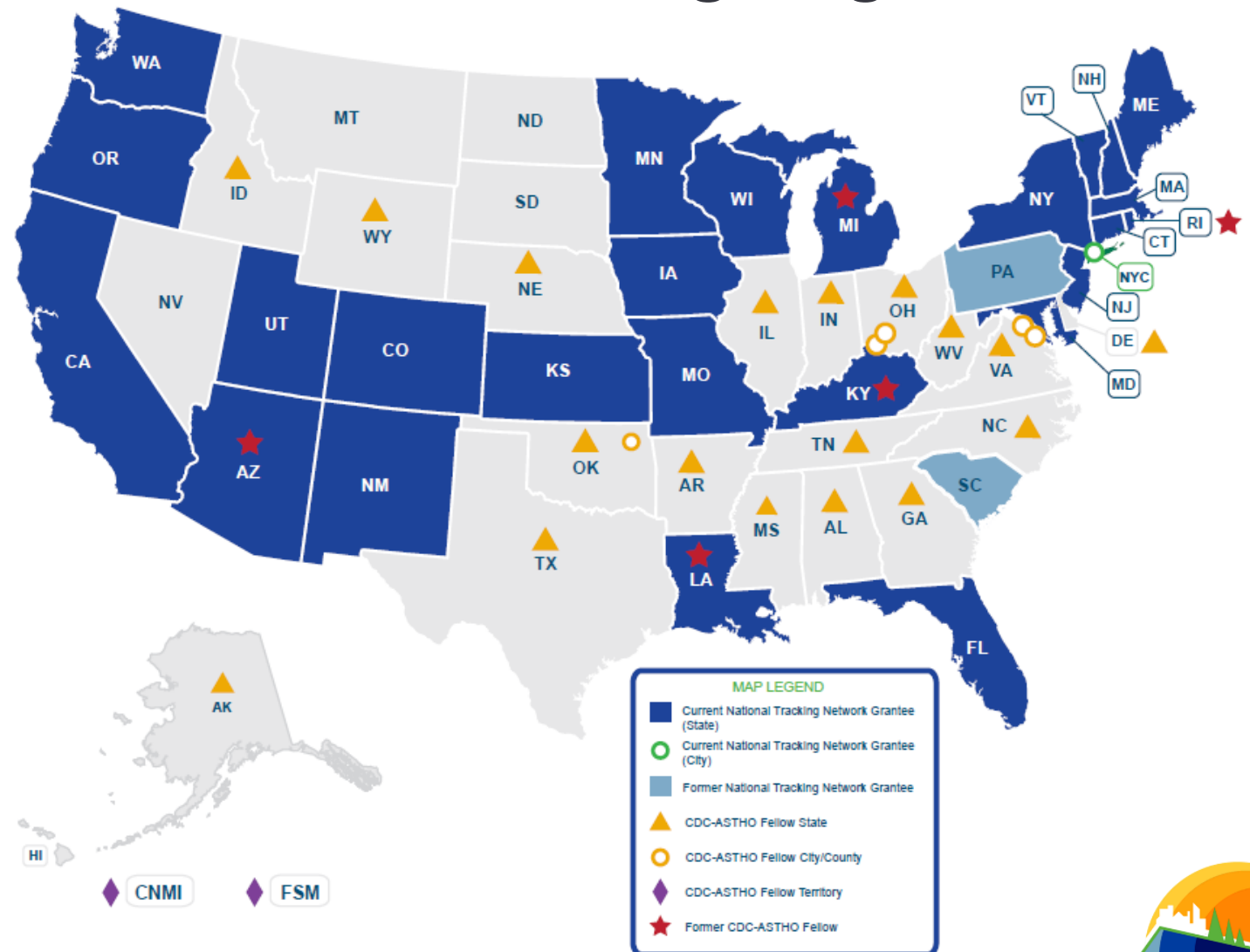
CDC-ASTHO
Fellowships

Since 2009

Vital

Partnerships

With CDC Programs, Other Federal Agencies, National Organizations, Community Groups



August 2021





ENVIRONMENTAL PUBLIC HEALTH

TRACKING

CONNECTS ENVIRONMENT & HEALTH INFORMATION

Check out CDC's data explorer and state and local tracking programs for more information.

Environmental

- Radon
- Drought
- Sunlight & UV
- Wildfire Smoke
- Air Quality
- Extreme Heat
- Drinking Water
- Flood Vulnerability
- Community Design

- Pesticide Exposures
- Toxic Substance Releases
- Other Environmental Chemicals

Exposures

Health Effects

- Asthma
- Cancer
- Heart Disease
- Heat Stress Illness
- Childhood Lead Poisoning
- Developmental Disabilities
- Carbon Monoxide Poisoning
- Reproductive and Birth Outcomes

Population Characteristics

- Lifestyle Risk Factors
- Socioeconomics
- Demographics
- Vulnerabilities





ENVIRONMENTAL PUBLIC HEALTH

TRACKING

DELIVERS DATA RELEVANT TO YOUR NEEDS

*Tracking makes standardized
data easier to use.*

Data Visualizations

Interactive Tools

Contextual Information

Downloadable Datasets

State & Local Resources



Dashboards



Interactive Data Explorer
(maps, charts, and tables)



**Application Program
Interface (API)**



**Location-specific
Information**
(County Level)

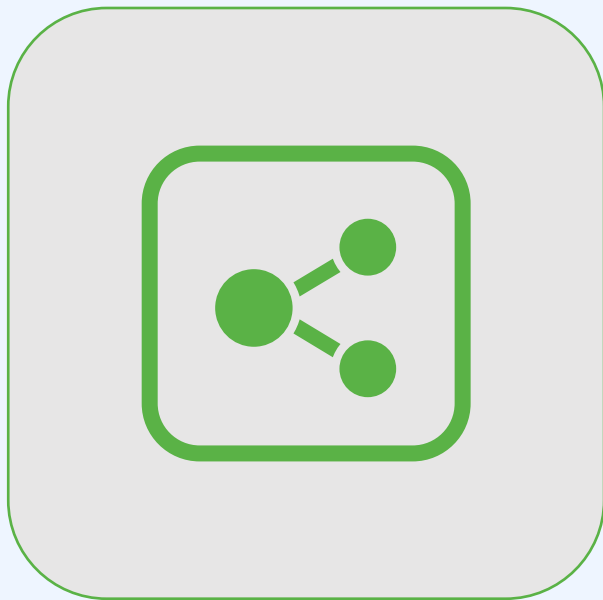
Visit www.cdc.gov/ephtracking
to explore these tools and more.



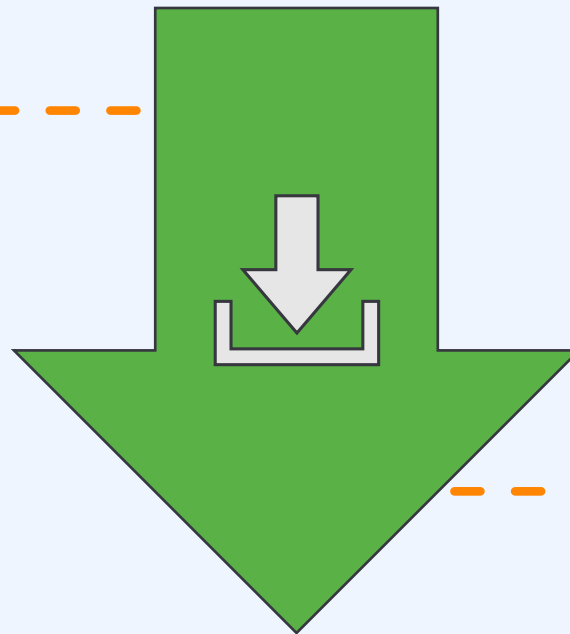


ENVIRONMENTAL PUBLIC HEALTH

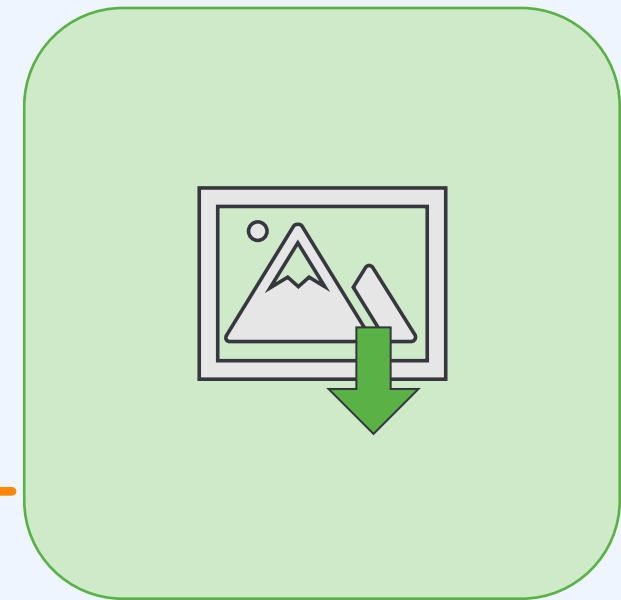
TRACKING MAKES DATA EASY TO SHARE



Share links



Download data files



Create images or
Data Visualizations

TRACKING IN ACTION



ENVIRONMENTAL PUBLIC HEALTH

TRACKING

HELPS IMPROVE HEALTH WITH **DATA, TOOLS, AND EXPERTISE**



*Target
prevention
activities*



*Monitor
community
health*



*Identify
communities
at risk*



*Support
epidemiologic
studies*



*Educate
residents*

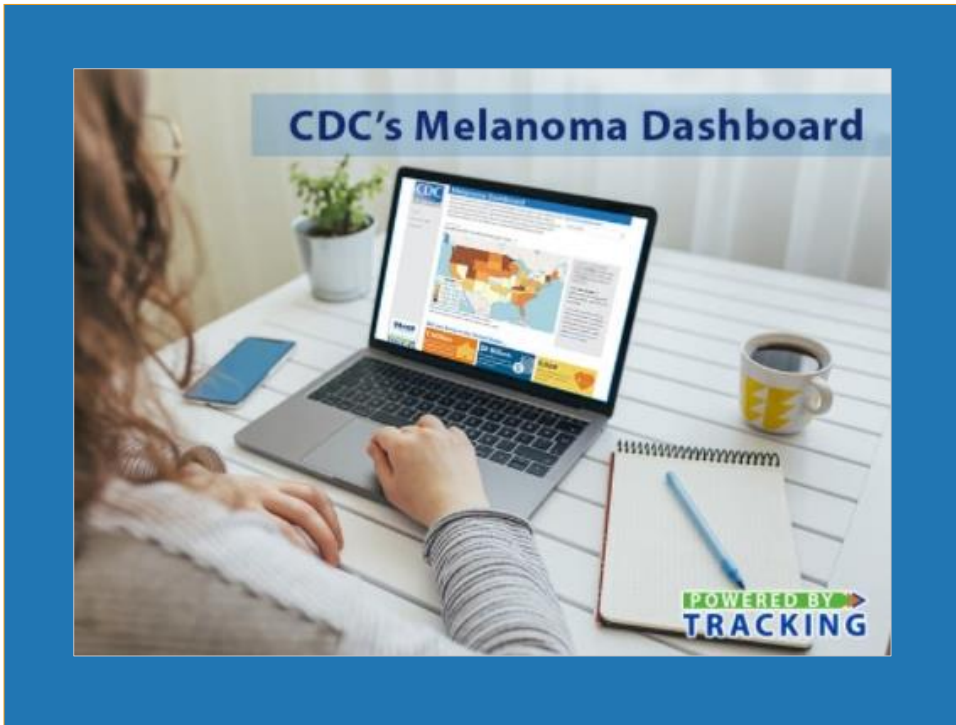


*Inform city or
state planning*



*Inform health
policies*

POWERED BY TRACKING



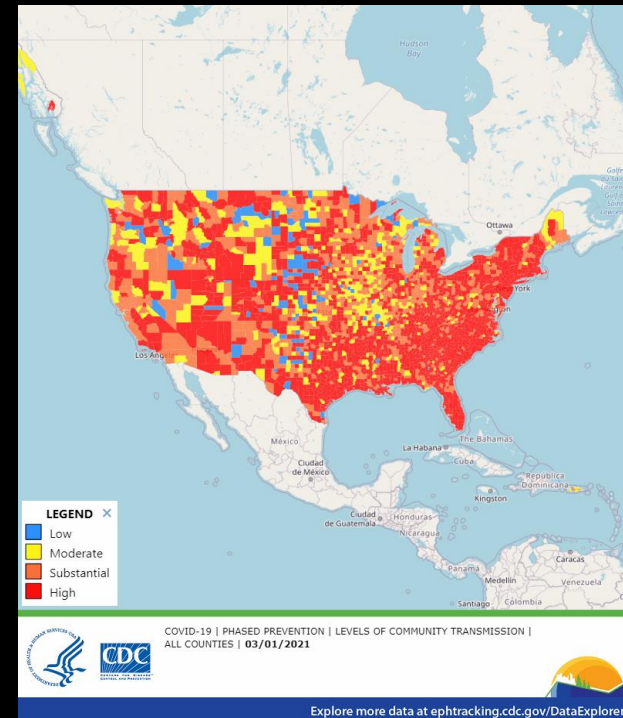
CDC's COVID Data Tracker



CDC Tracking Network @CDC_EPHTracking · Apr 19

See new animated maps on the COVID Data Tracker, powered by CDC's Tracking Network: bit.ly/COVIDDataTrack...

Choose the data you're interested in, then click "View Time Lapse," to see how #COVID19 trends are changing over time.
[#PoweredByTracking](#)



TRACKING & PREPAREDNESS

TRACKING'S ROLE IN PREPAREDNESS ACTIVITIES



*identify households or
geographies at risk*



*determine available
community assets*



*calculate needed
resources*

PREPAREDNESS RESOURCES



Datasets

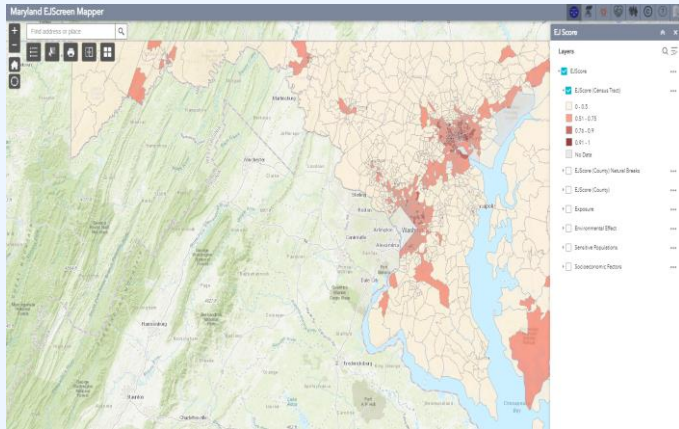
- Community Characteristics
- Populations & Vulnerabilities
- Flooding & Precipitation
- Extreme Heat

Tools

- Wildfire smoke tool
- Real-time overlays
- Points of interest



Maryland



California

Environmental Justice Resources

What is Environmental Justice?

Increasing attention to Environmental Justice (EJ) has brought attention to the need to better identify areas with environmental justice concerns. These are areas with larger populations of low income and people of color residents in proximity to a disproportionate burden of potentially harmful environmental hazards.

Below are two resources developed by governmental agencies that aim to bring attention to and help address these environmental justice concerns.

- The EJ Screen
 - Developed by the federal EPA, EJ Screen has information on environmental hazards and population metrics at the census block level across the United States.
- The CalEnviroScreen
 - Developed by the California EPA's Office of Environmental Health Hazard Assessment, Cal EnviroScreen has information on environmental hazards and health indicators at the census tract level across California.

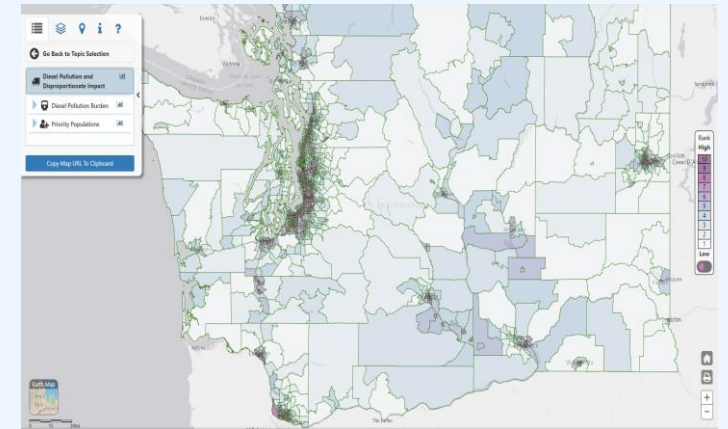
Both resources include support features that help individuals understand the data displayed.

IF YOU HAVE QUESTIONS OR WOULD LIKE TO REQUEST DATA [CONTACT US!](#)

[Facebook](#) [Twitter](#) [Email](#)

Projects	About Us	Help Center
Environmental Justice	Imperial Air Project	New Name, Same Program
Healthy Homes	Agricultural Pesticides Near Public Schools	Mission & Values
Heat-Related Illness	Hidden Lead	Staff
Heart Attacks	Sickle Cell Data Collection	Advisory Partners
Maternal and Infant Health	More projects...	Project Partners
Pesticides		Data Sources
PFAS		Funding

Washington



Tracking EJ Efforts Across the Country



Tracking Dashboards

Environmental Public Health Tracking Network

Demonstration



POWERED BY TRACKING

Learn more about the Tracking Program

Better Information for Better Health

The National Environmental Public Health Tracking Network (Tracking Network) brings together health data and environmental data from national, state, and city sources and provides supporting information to make the data easier to understand. The Tracking Network has data and information on environments and hazards, health effects, and population health.

[Explore Data](#)

Explore Data
Search and download a variety of data in maps, charts, and tables

[Data Explorer Tool](#)

View Dashboards
View our 'Powered by Tracking' dashboards and learn more about important issues

[Dashboards](#)

State and Local Tracking Programs
View CDC-funded health departments that build and implement local tracking programs and data networks

[Tracking Programs](#)



Visit the Tracking Network today!

www.cdc.gov/ephtracking

Follow Tracking on social media:

 facebook.com/CDCEPHTracking

 [@CDC_EPHTracking](https://twitter.com/CDC_EPHTracking)

For more information, contact NCEH
1-800-CDC-INFO (232-4636)
TTY: 1-888-232-6348 www.cdc.gov

The findings and conclusions in this report are those of the authors and do not necessarily represent the official position of the Centers for Disease Control and Prevention.





Please submit your questions for the presenters using the Q & A function.

The views expressed in this webinar do not necessarily reflect that of CDC.



Thank you!



About APHA

The American Public Health Association champions the health of all people and all communities. We strengthen the public health profession, promote best practices and share the latest public health research and information. We are the only organization that combines a 150-year perspective, a broad-based member community and the ability to influence policy to improve the public's health. Learn more at www.apha.org.



800 I Street, NW
Washington, DC 20001-3710
202-777-2742
www.apha.org