



# THE PAST & FUTURE OF THE BENCHMARKING PROJECT

Ken McLeod  
Policy Director  
202.621.5447  
[ken@bikeleague.org](mailto:ken@bikeleague.org)

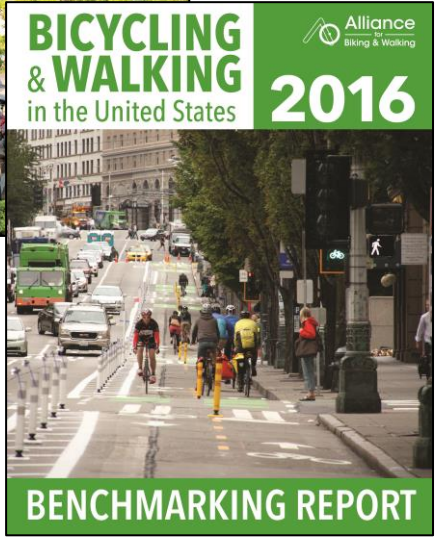
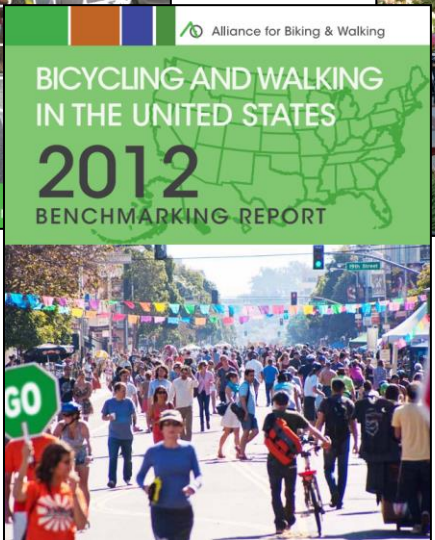
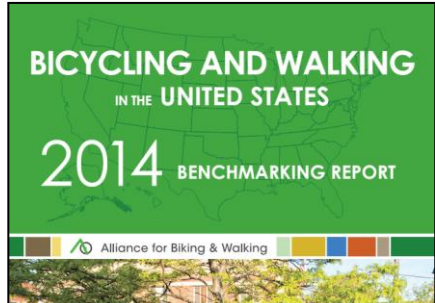
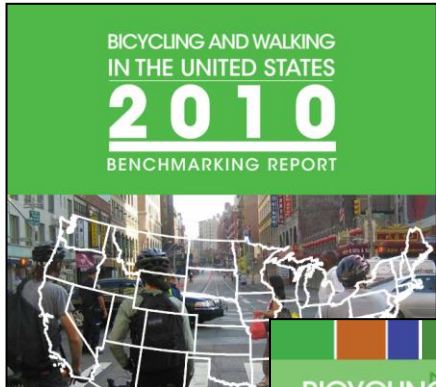
1612 K STREET,  
NW, SUITE 1102  
WASHINGTON, DC  
20006



Benchmarking  
Report



# HISTORY OF THE BENCHMARKING REPORT



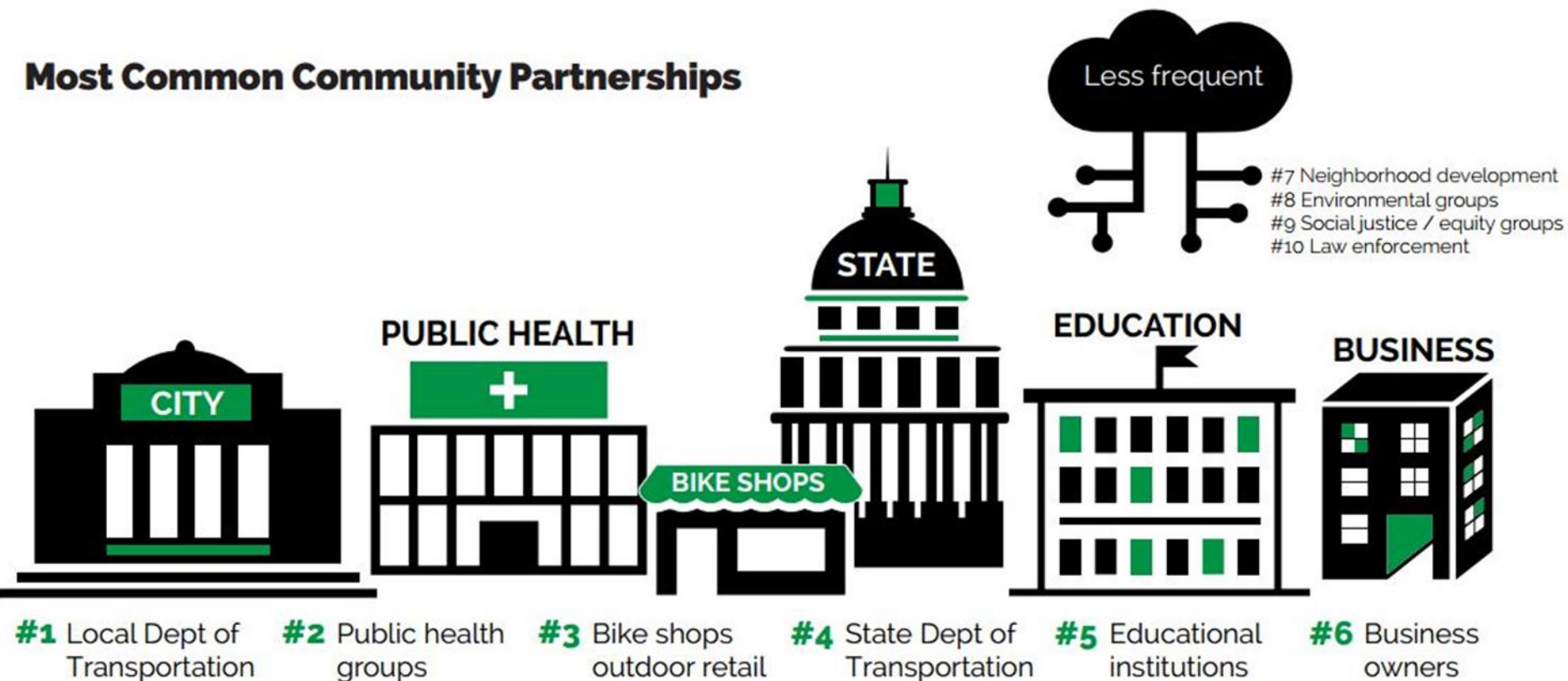
# ACTIVE TRANSPORTATION LEADERSHIP INSTITUTE MEMBERSHIP

## Geographic focus of Alliance member organizations



# ACTIVE TRANSPORTATION LEADERSHIP INSTITUTE PARTNERS

## Most Common Community Partnerships



# HISTORY OF THE LEAGUE OF AMERICAN BICYCLISTS

- » Founded in 1880 to advocate for paved roads
- » Our Mission:
  - » To lead a movement to create a Bicycle Friendly America for Everyone.
- » Membership organization
  - » Individuals
  - » Non-profit organizations
  - » Business members and affiliates



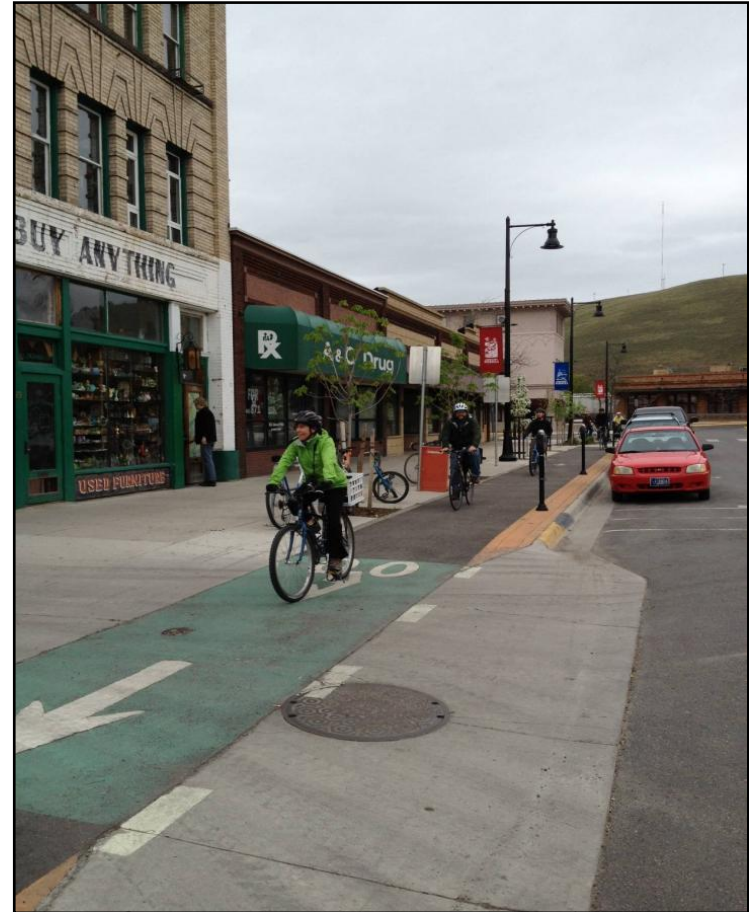
# HISTORY OF BICYCLE FRIENDLY AMERICA PROGRAM

» 1995  **BICYCLE FRIENDLY COMMUNITY™**


» 2008  **BICYCLE FRIENDLY BUSINESS™**

» 2008  **BICYCLE FRIENDLY STATE™**

» 2011  **BICYCLE FRIENDLY UNIVERSITY™**



# BICYCLE FRIENDLY STATE PROGRAM


**BICYCLE FRIENDLY STATE**
2014 REPORT CARD

This gives a brief overview of the transportation decision makers in the state.

Colorado

RANKING # 6

REGIONAL RANKING » WEST #3

GOVERNOR: John Hickenlooper  
 DOT COMMISSIONER: Don Hunt  
 BICYCLE/PEDESTRIAN COORDINATOR: Betsy Jacobsen  
 STATE ADVOCACY GROUP: Bicycle Colorado

CATEGORY SCORES SCORING: 5 = HIGH 1 = LOW

4	LEGISLATION AND ENFORCEMENT	🚲
3	POLICIES AND PROGRAMS	🚲
2	INFRASTRUCTURE AND FUNDING	🚲
4	EDUCATION AND ENCOURAGEMENT	🚲
2	EVALUATION AND PLANNING	🚲

TOP 10 SIGNS OF SUCCESS 🚲 = NEW IN 2014

- 🚲 PEOPLE COMMUTING BY BIKE (MORE THAN 1%)
- 🚲 SAFE PASSING/VULNERABLE ROAD USER LAW
- 🚲 COMPLETE STREETS POLICY
- 🚲 COMMITTED STATE FUNDING
- 🚲 ACTIVE STATE ADVOCACY GROUP
- 🚲 STATE BICYCLE PLAN (ADOPTED 2004 OR LATER)
- 🚲 SHARE THE ROAD CAMPAIGN
- 🚲 BICYCLE EDUCATION FOR POLICE
- 🚲 BICYCLE SAFETY EMPHASIS IN STRATEGIC HIGHWAY SAFETY PLAN
- 🚲 TOP 10 STATE FOR CONGESTION MITIGATION AND AIR QUALITY SPENDING

The overall points are determined by a weighted sum of each category score.

Each category is judged on a 5-point scale. Chevrons show the state compares in each category to the year before.

Each year the League works with state bicycle advocates to determine appropriate priority feedback for the state. These are often actions that the governor, legislature, or state DOT officials can take to improve bicycling in the state.

These Top 10 Signs of Success are the same for every state. A blue bicycle means a state has that Sign of Success, while an orange bicycle means that that Sign of Success is new for this year or has been updated.

**OVERALL POINTS**  
54.1 of 100 2013: 60.7 of 100

**FEEDBACK**

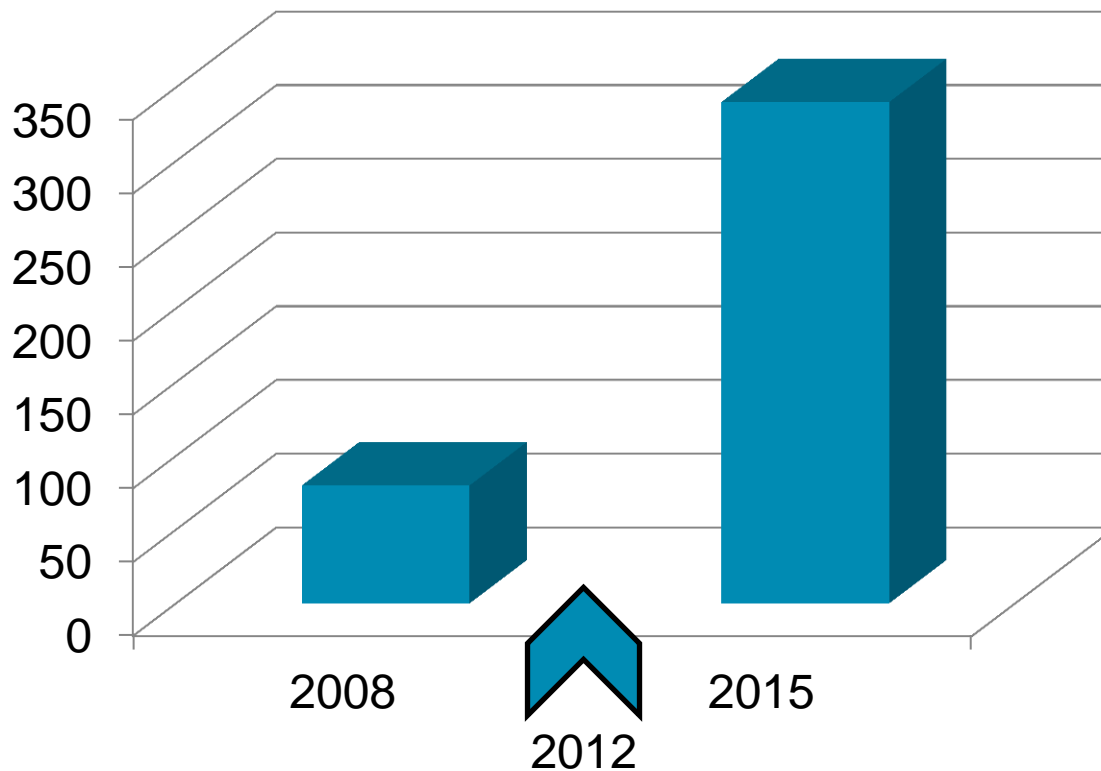
- Adopt performance measures, such as mode shift or a low percentage of exempted projects, to better track and support Complete Streets/ Bike Accommodation Policy compliance.
- Adopt the NACTO Bikeway Design Guide as an approved design manual for the state.
- Adopt a policy requiring state office buildings, state park and recreation facilities, and other state facilities to provide bicycle parking.
- Create a system of state bike routes that are safe (e.g. wide shoulders, bike lanes, etc.), connect to destinations, and are suitable for all types of bicycles.
- Add bicycle safety as an emphasis area in the state Strategic Highway Safety Plan and aggressively fund bike safety projects.
- Adopt a mode share goal for biking to encourage the integration of bicycle transportation needs into all transportation and land use policy and project decisions.

**THE LEAGUE OF AMERICAN BICYCLISTS**  
since 1898

The Bicycle Friendly States ranking is based on a comprehensive survey completed by state departments of transportation and state bicycling advocates. It asks comprehensive questions across 5 categories: Legislation and Enforcement, Policies and Programs, Infrastructure and Funding, Education and Encouragement, Evaluation and Planning. The results listed above provide only a snapshot of the full application. They are intended to offer some ideas for further growth in bicycle friendliness. For more information, visit [www.bikeleague.org/states](http://www.bikeleague.org/states) or contact Nicole Reynolds at (800) 427-0212 or [nreynolds@bikeleague.org](mailto:nreynolds@bikeleague.org).

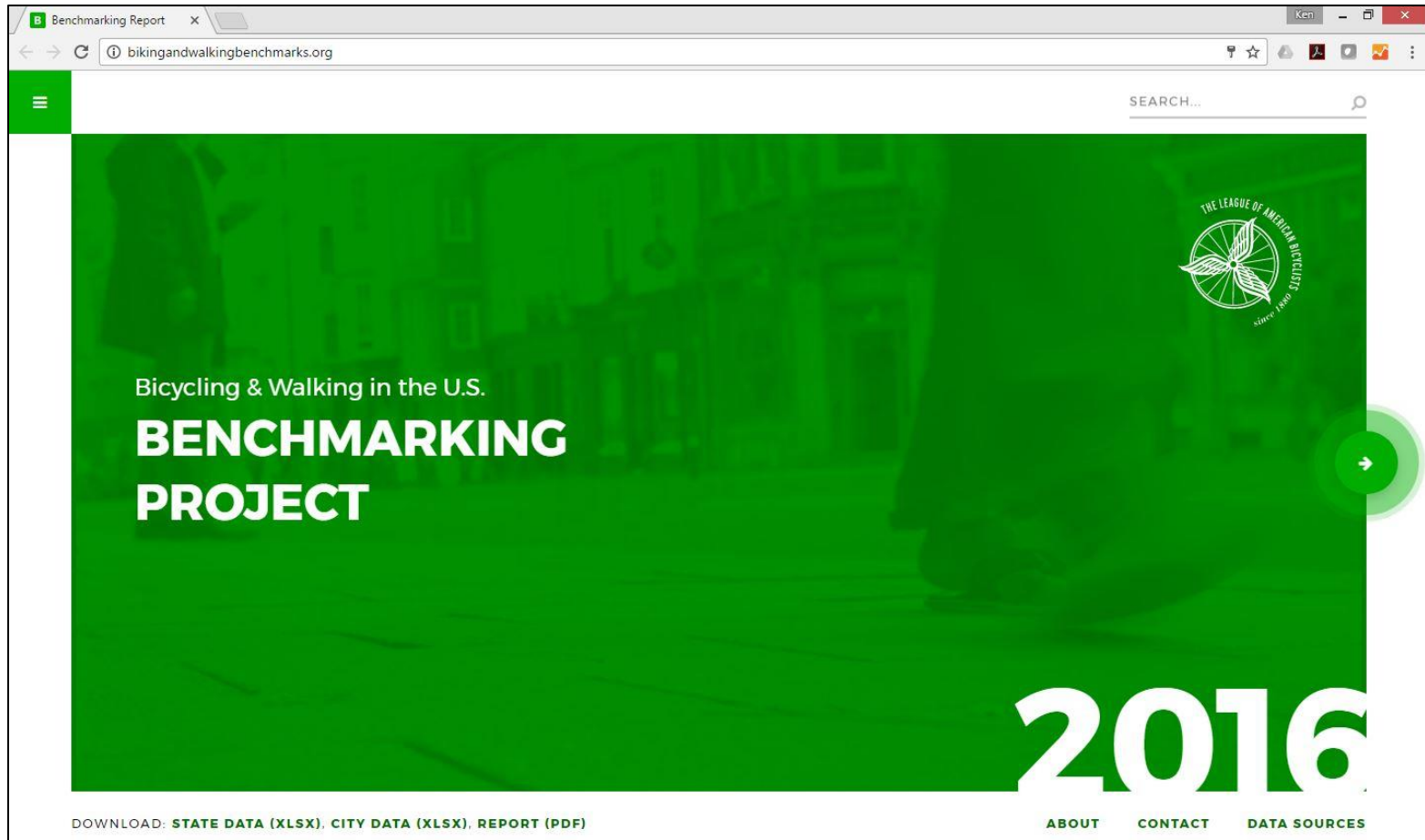
# MERGED BICYCLE FRIENDLY STATE & BENCHMARKING SURVEYS

Data Points in Bicycle Friendly State survey





# BENCHMARKING REPORT WEBSITE



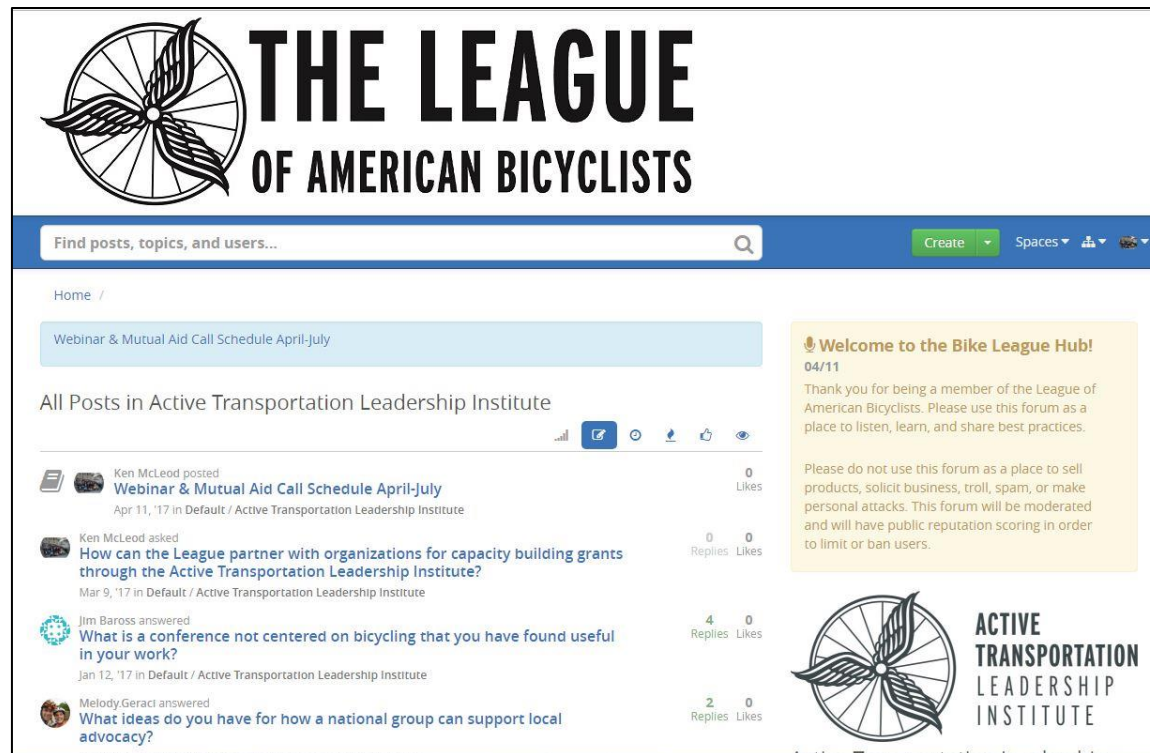
# FUTURE OF BENCHMARKING REPORT

- » Next Step:
  - » Explore merging BFC application and Benchmarking City Survey



# BIKELEAGUE HUB

» Launching in late June/early July



The screenshot displays the 'THE LEAGUE OF AMERICAN BICYCLISTS' website. At the top left is the League logo, a stylized bicycle wheel with a leaf-like shape. The main header reads 'THE LEAGUE OF AMERICAN BICYCLISTS'. Below the header is a search bar with the text 'Find posts, topics, and users...' and a magnifying glass icon. To the right of the search bar are buttons for 'Create', 'Spaces', and user avatars. The main content area is titled 'Home /' and features a blue banner for 'Webinar & Mutual Aid Call Schedule April-July'. Below this is a section titled 'All Posts in Active Transportation Leadership Institute' with a list of posts:

- Ken McLeod posted: **Webinar & Mutual Aid Call Schedule April-July** (Apr 11, '17 in Default / Active Transportation Leadership Institute) - 0 Likes
- Ken McLeod asked: **How can the League partner with organizations for capacity building grants through the Active Transportation Leadership Institute?** (Mar 9, '17 in Default / Active Transportation Leadership Institute) - 0 Replies, 0 Likes
- Jim Baross answered: **What is a conference not centered on bicycling that you have found useful in your work?** (Jan 12, '17 in Default / Active Transportation Leadership Institute) - 4 Replies, 0 Likes
- Melody Geract answered: **What ideas do you have for how a national group can support local advocacy?** - 2 Replies, 0 Likes

On the right side, there is a yellow box titled 'Welcome to the Bike League Hub!' dated 04/11. The text inside reads: 'Thank you for being a member of the League of American Bicyclists. Please use this forum as a place to listen, learn, and share best practices. Please do not use this forum as a place to sell products, solicit business, troll, spam, or make personal attacks. This forum will be moderated and will have public reputation scoring in order to limit or ban users.' Below this box is the logo for 'ACTIVE TRANSPORTATION LEADERSHIP INSTITUTE'.

# FUTURE OF BENCHMARKING REPORT

- » Continue to make data more accessible
- » Use Bikeleague Hub to better understand data needs and use cases of Benchmarking Report for advocates, practitioners, and other users
- » Publish 2017 Bicycle Friendly State ranking in July/August
- » Publish 2018 Benchmarking Report



Text

**Thank you!**

**1612 K STREET, NW, SUITE 1102**

**WASHINGTON, DC 20006**

**202.822.1333 | @BIKELEAGUE**

**WWW.BIKELEAGUE.ORG**

