

EMBEDDING HEALTH AND EQUITY INTO THE FABRIC OF GOVERNMENT



1

Lianne Dillon, MPH
Policy Associate II
Public Health Institute
California Department of Public Health

PRESENTER DISCLOSURES

Lianne Dillon

- (1) The following personal financial relationships with commercial interests relevant to this presentation existed during the past 12 months:**

No relationships to disclose



ACKNOWLEDGEMENTS

- California's Health in All Policies Task Force
- Public Health Institute
- California Department of Public Health
- California Strategic Growth Council

*With funding from The California Endowment,
American Public Health Association, Kaiser
Community Benefits, and Community Transformation
Grants*

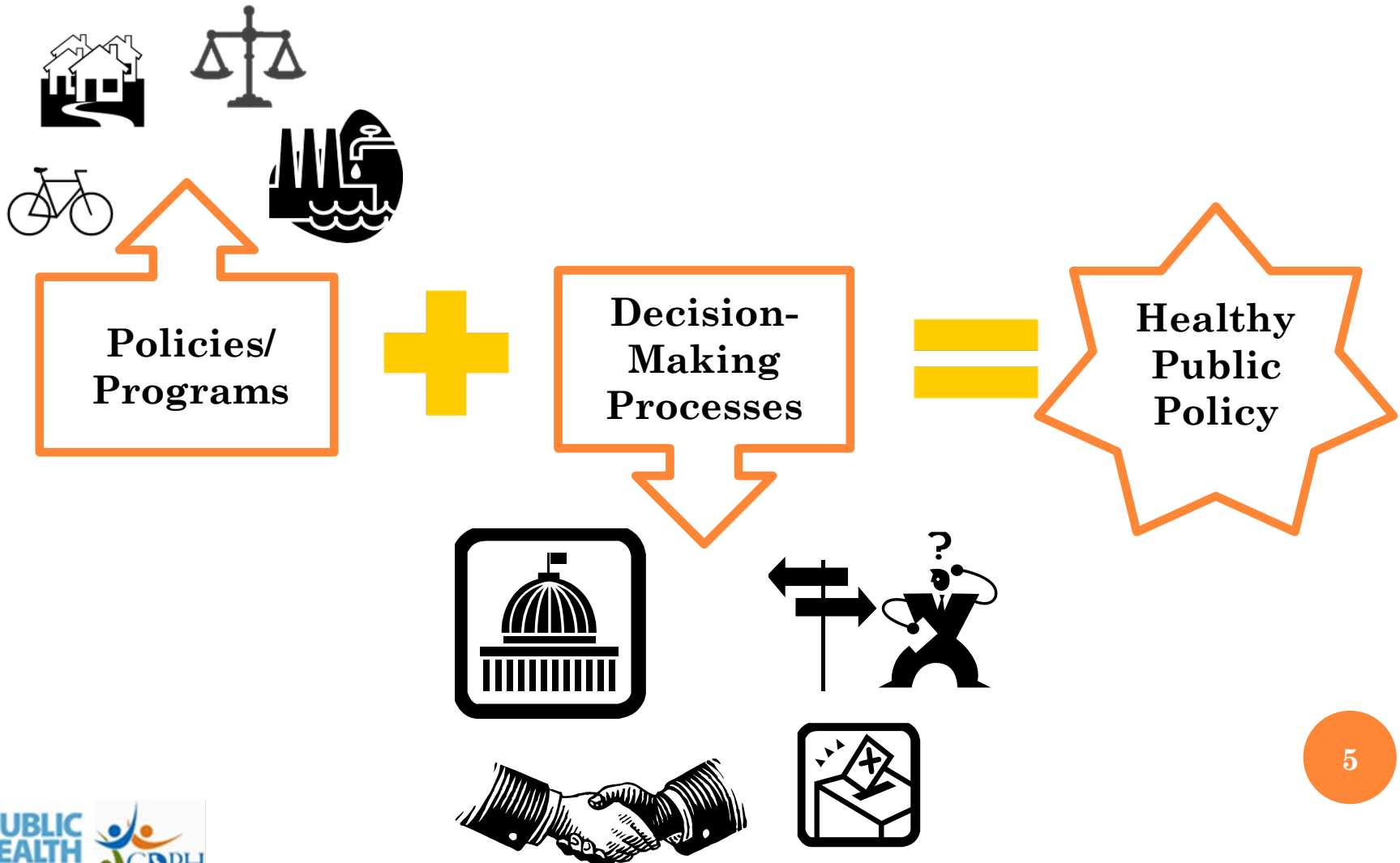


HEALTH IN ALL POLICIES KEY ELEMENTS



- Promotes health, equity, & sustainability
- Supports intersectoral collaboration
- Benefits multiple partners
- Engages external stakeholders
- Creates structural or process change

PROMOTES HEALTH, EQUITY, & SUSTAINABILITY



HEALTHY PUBLIC POLICY

- What is policy?
 - Individual, Organizational, Public
- Mechanisms



- Data
- Direct Service Provision
- Education & Information
- Employer
- Funding
- Guidance and Best Practices
- Permits/Licenses

- Purchasing, Procurement, Contracts
- Regulation
- Research & Evaluation
- Legislation & Ordinances
- Taxes/Fees
- Training and Technical Assistance

HEALTHY PUBLIC POLICY TOOLS



- Applying a Health Lens
 - Provide scientifically valid information
 - Allow consideration of health consequences
 - Part of the decision-making process

- Structured Approaches:
 - Health Impact Assessment
 - Health Lens Analysis

HEALTHY PUBLIC POLICY TOOLS

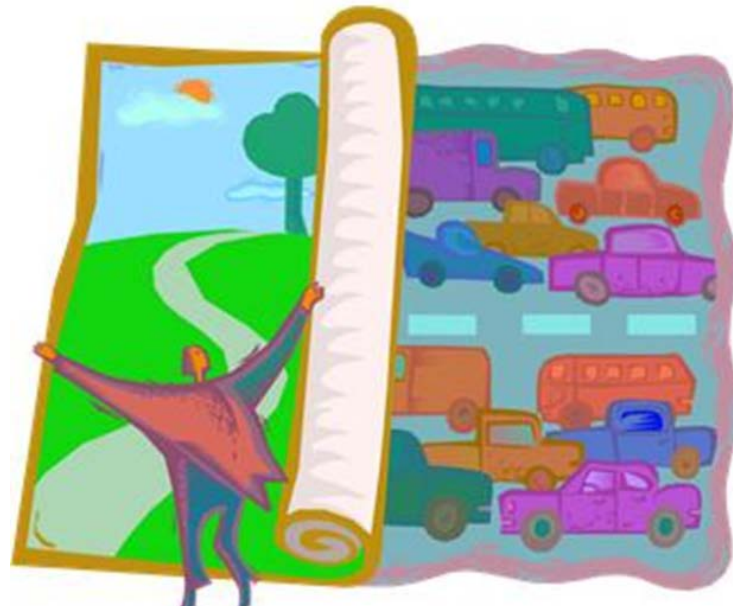


○ Health Lens Considerations

- Timing (partners and process)
- How will the information be used?
- Is there a good reason to the analysis?
- Is evidence available?
- Are there broader health considerations that are not being considered?
- Formal, Structured, Rigorous?

HEALTHY PUBLIC POLICY MECHANISM: GUIDANCE & BEST PRACTICES

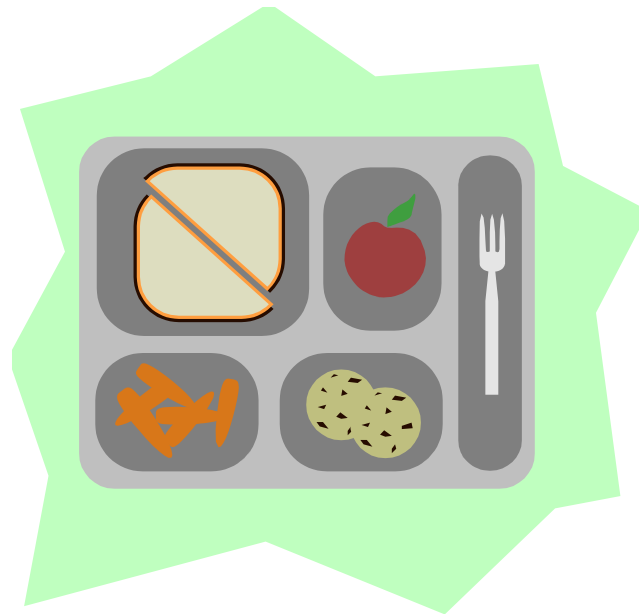
- **Health in General/Comprehensive Plan Guidelines**
 - Planning, Education, Forestry, Parks, Transportation
- **Aligning school facility and city planning processes**
 - Education, Planning, Transportation, Public Health



HEALTHY PUBLIC POLICY MECHANISM: PURCHASING, PROCUREMENT, CONTRACTS

○ Food Procurement

- Public Health, Corrections, General Services, Education, Rehabilitation, Food/Agriculture



HEALTHY PUBLIC POLICY MECHANISM: TRAINING AND TECHNICAL ASSISTANCE

- **Sustainable Community Planning Grants**
 - Transportation, Housing, Environment, Conservation, Health, Water, Planning
- **Complete Streets Workshop**
 - Community Services, Planning, Health, Transportation, General Services, Environment, Air, Personnel, Education